



£270,000

🔑 TENURE: Freehold

📊 EPC RATING: D

💷 COUNCIL TAX BAND: C

Gnosall Stafford

Fountain Fold Gnosall
Stafford Staffordshire



It's all about location and this superb, recently modernised, two bedroom detached bungalow certainly benefits from that! Situated on an enviable corner plot within the highly desirable Village of Gnosall having, shops, amenities, petrol station, public houses and doctors surgery all on your doorstep!

Internally, the accommodation comprises of an entrance hall, spacious lounge diner, refitted kitchen, inner hall, refitted, contemporary style bathroom and two good sized bedrooms. Externally, the property sits on a large, well stocked, corner plot having lawned gardens to the front and side elevations, and a private rear garden with paved seating area, the property also benefits from a driveway and detached brick built garage.

- Modernised Two Bed Detached Bungalow
- Good Sized Plot, Driveway & Detached Garage
- Living Room & Refitted Kitchen
- Inner Hallway & Refitted Bathroom
- Desirable Village Location, Nearby Amenities
- No Onward Chain

You can reach us **9am to 9pm**, 7 days a week

14 Salter Street, Stafford, Staffordshire, ST16 2JU

01785 223344

hello@dourishandday.co.uk



Entrance Porch

Approached through a double glazed entrance door and having a further door leading-in to the Lounge.

Lounge 15' 9" x 11' 11" (4.79m x 3.62m)

A spacious and light lounge having double height, double glazed window to the front elevation, radiator and a contemporary fireplace opening, doors to Kitchen and Inner Hall.

Kitchen 9' 8" x 8' 0" (2.94m x 2.45m)

A refitted kitchen comprising of a matching range of wall, base & drawer units with work surfaces over incorporating an inset stainless steel sink with drainer. Appliances include; 4-ring electric hob with extractor over, integrated oven/grill, and having space & plumbing for appliances. There is splashback tiling to the walls, ceramic tiling to the floor, two double glazed windows to two elevations, and a double glazed door to the side elevation.

Inner Hallway

Having an airing cupboard housing the gas central heating boiler, doors off to bedrooms and bathroom.



You can reach us **9am to 9pm**, 7 days a week

14 Salter Street, Stafford, Staffordshire, ST16 2JU

01785 223344

hello@dourishandday.co.uk

Bedroom One 12' 10" x 11' 9" (3.90m x 3.59m)

A spacious double bedroom having access to loft space, radiator, and a large double glazed picture window to the rear elevation.

Bedroom Two 9' 11" x 8' 0" (3.02m x 2.44m)

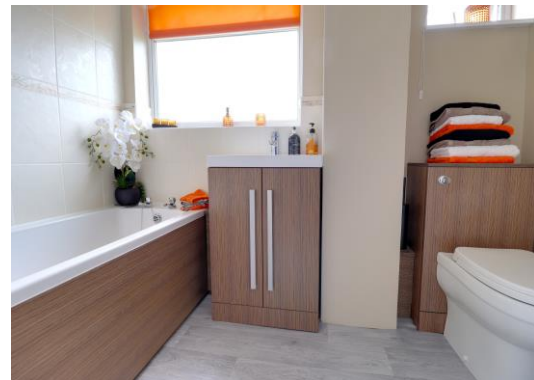
Having a radiator and double glazed window to the rear elevation.

Bathroom 8' 5" x 4' 8" (2.56m x 1.42m)

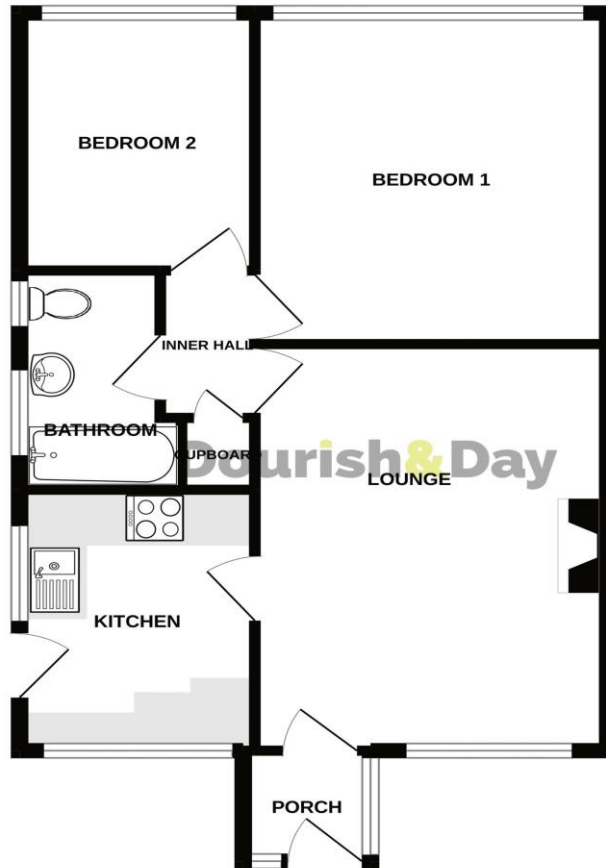
Comprising panelled bath with folding shower screen and mains shower over, wash hand basin with vanity unit beneath, and a dual flush WC with enclosed cistern. There is splashback tiling, radiator, and two double glazed windows to the side elevation.

Externally

The property sits on a very good sized end plot having lawned gardens to the front, gated access to the side leading to a large side garden laid mainly to lawn with well stocked flower beds and gate leading to the driveway and garage. From the side garden is a gated access leading to the rear garden being well maintained, again laid mainly to lawn with sunken vegetable garden area and paved patio.

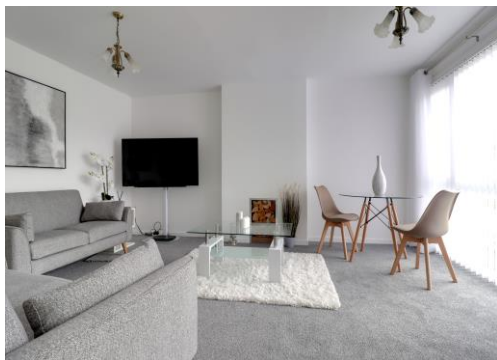


GROUND FLOOR



Energy Efficiency Rating		Current	Potential
Very energy efficient - lower running costs			
92-100	A		
81-91	B		
69-80	C		
55-68	D		
39-54	E		
21-38	F		
1-20	G		
Not energy efficient - higher running costs			
England, Scotland & Wales			EU Directive 2002/91/EC

Whilst every attempt has been made to ensure the accuracy of the floorplan contained here, measurements of doors, windows, rooms and any other items are approximate and no responsibility is taken for any error, omission or mis-statement. This plan is for illustrative purposes only and should be used as such by any prospective purchaser. The services, systems and appliances shown have not been tested and no guarantee as to their operability or efficiency can be given.
Made with Metropix ©2022



IMPORTANT NOTICE Dourish & Day for themselves and for the vendor or lessors of this property whose agents they are given notice that: (i) the particulars are set out as a general outline only for the guidance of intending purchasers or lessees, and do not constitute, nor constitute part of, an offer of contract, (ii) all descriptions, dimensions, references to condition and necessary permissions for use and occupation, and other details are given in good faith and are believed to be correct but any intending purchasers or tenants should not rely on them as statement or representation of fact but must satisfy themselves by inspection or otherwise as to the correctness of each of them, (iii) no person in the employment of Dourish & Day has any authority to make or give any representation or warranty whatever in relation to this property.

You can reach us **9am to 9pm**, 7 days a week

14 Salter Street, Stafford, Staffordshire, ST16 2JU

01785 223344

hello@dourishandday.co.uk